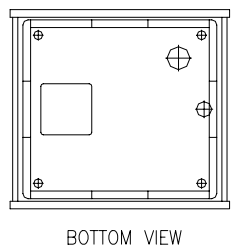
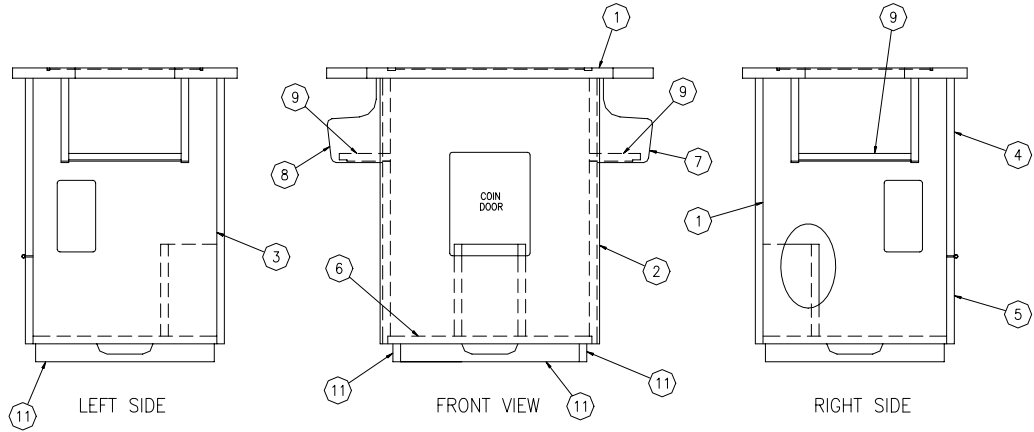
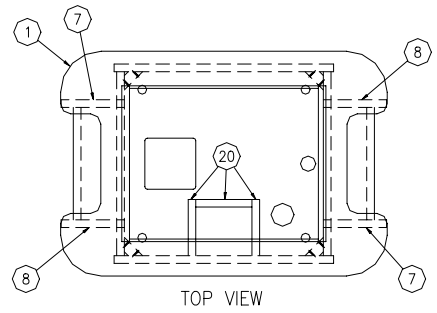


REVISIONS				
ZONE	REV	DESCRIPTION	DATE	APPROVED



SEE ASSEMBLY INSTRUCTIONS FOR ASSEMBLY PROCESS

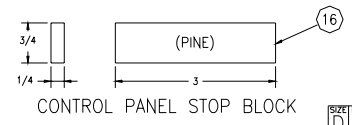
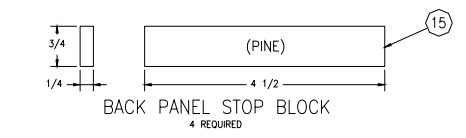
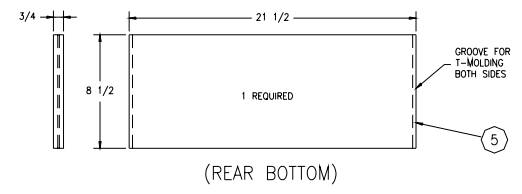
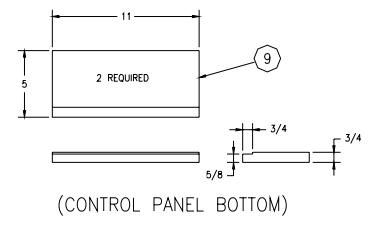
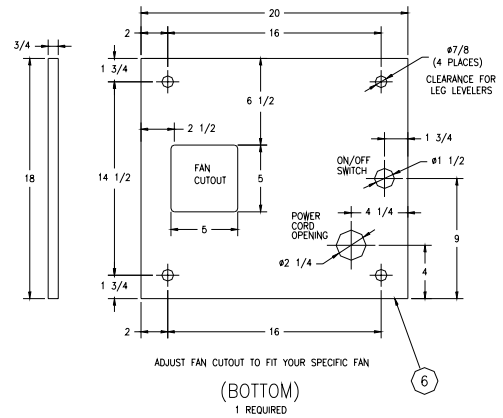
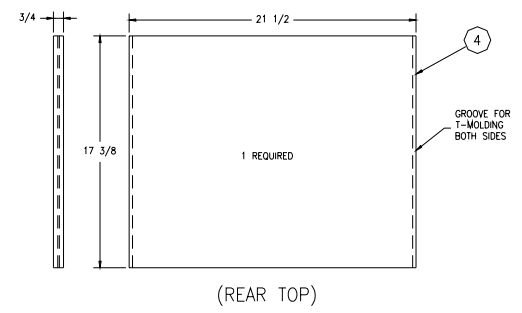
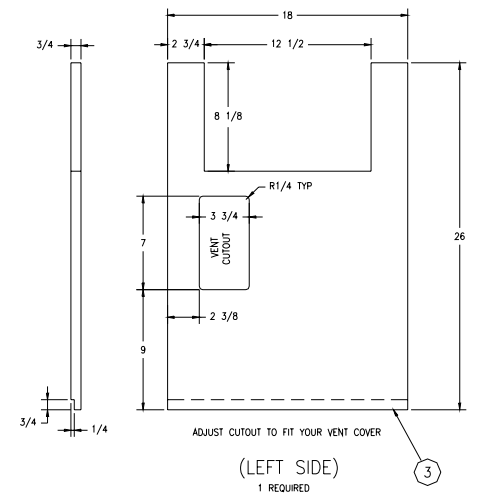
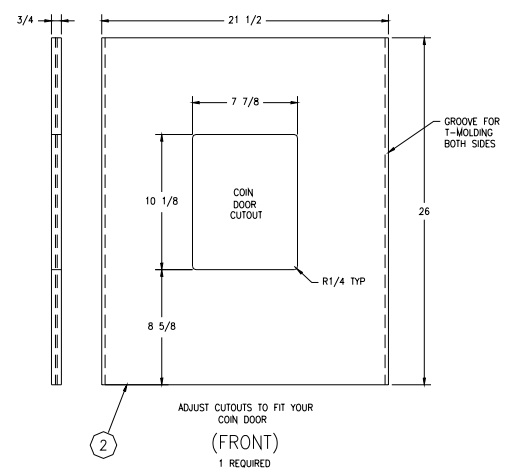
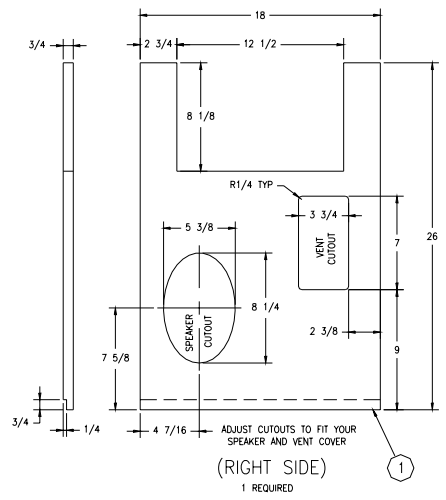
MATERIAL LIST:

- 1.) 4' x 8' x 3/4" PLYWOOD, (HIGH GRADE), (ITEMS 1, 2, 3, 4, 5, 6, 7, 8, 9, 11, 20)
- 2.) 22" x 32" x 1" PLYWOOD, (ITEM 10)
- 3.) 3/4" x 2" x 12" PINE, (ITEM 12)
- 4.) 1" x 2 1/2" x 12" PINE, (ITEM 13)
- 5.) 1" x 1" x 19" PINE, (ITEM 14)
- 6.) 1/4" x 3/4" x 36" PINE, (ITEMS 15 & 16)
- 7.) 1/8" x 3/4" x 18" STEEL, (ITEM 19) (OPTIONAL BRASS)
- 8.) 1/8" x 10" x 11" WHITE ACRYLIC SHEET, (ITEM 18) (HEAT RESISTANT)
- 9.) 16 Ga. (1/16)" x 10 3/4" x 10 15/16" STEEL SHEET, (ITEM 17) (OPTIONAL TO BUY THIS PART)

20	3	COIN BOX SIDES	PLYWOOD, 3/4" x 5 1/2" x 7"	SHEET 6
19	4	CONTROL PANEL BRACKET	METAL, 1/8" x 3/4" x 3 7/8"	SHEET 4
18	2	CONTROL PANEL PLASTIC	WHITE COLORED ACRYLIC SHEET, 1/8" x 4 3/4" x 11"	SHEET 6
17	2	CONTROL PANEL	STEEL, 16 GA (1/16)" x 10 3/4" x 10 15/16"	SHEET 5
16	4	CONTROL PANEL STOP BLOCK	PINE, 1/4" x 3/4" x 3"	SHEET 2
15	4	BACK PANEL STOP BLOCK	PINE, 1/4" x 3/4" x 4 1/2"	SHEET 2
14	1	TOP SUPPORT	PINE, 1" x 1" x 19"	SHEET 6
13	2	CORNER GUSSET	PINE, 1" x 2" x 2 1/2"	SHEET 3
12	4	CORNER SUPPORT	PINE, 3/4" x 2" x 4"	SHEET 4
11	4	BASE	PLYWOOD, 3/4" x 1 3/4" x 17 1/2"	SHEET 3
10	1	CABINET TOP	PLYWOOD, 1" x 22" x 32"	SHEET 4
9	2	CONTROL PANEL BASE	PLYWOOD, 3/4" x 5" x 11"	SHEET 2
8	2	CONTROL PANEL SIDE	PLYWOOD, 3/4" x 6 3/16" x 8 1/4"	SHEET 3
7	2	CONTROL PANEL SIDE	PLYWOOD, 3/4" x 6 3/16" x 8 1/4"	SHEET 3
6	1	BOTTOM	PLYWOOD, 3/4" x 18" x 20"	SHEET 2
5	1	REAR BOTTOM	PLYWOOD, 3/4" x 8 1/2" x 21 1/2"	SHEET 2
4	1	REAR TOP	PLYWOOD, 3/4" x 17 3/8" x 21 1/2"	SHEET 2
3	1	LEFT SIDE	PLYWOOD, 3/4" x 18" x 26"	SHEET 2
2	1	FRONT	PLYWOOD, 3/4" x 21 1/2" x 26"	SHEET 2
1	1	RIGHT SIDE	PLYWOOD, 3/4" x 18" x 26"	SHEET 2

ITEM NO	QTY	DESCRIPTION	MATERIAL SPECIFICATION	DETAIL LOCATION
PACMAN COCKTAIL CABINET PLANS				
DRAWN BY: KYLE LINDSTROM		DATE: 11/06/01		REV
SIZE: D	DRAWINGS NO:	PACMANCKTL		REV
SCALE: 3/16	WEIGHT	SHEET 1 OF 6		

REVISIONS				
ZONE	REV	DESCRIPTION	DATE	APPROVED



16

15

14

13

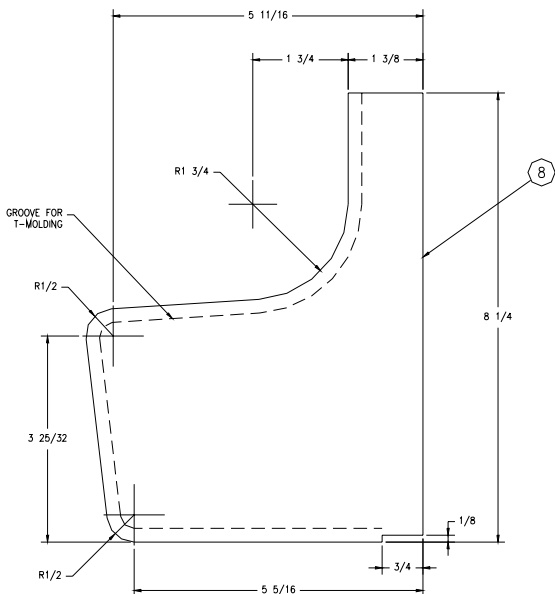
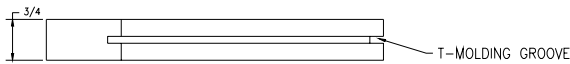
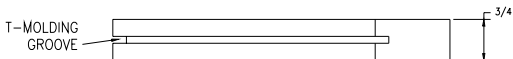
12

11

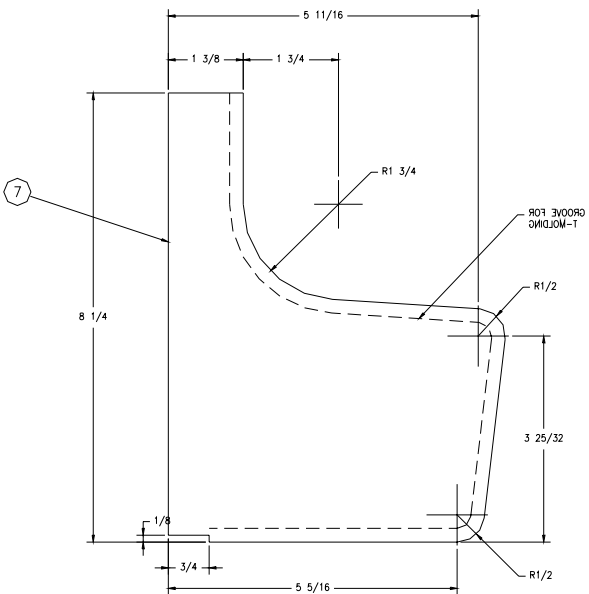
10

9

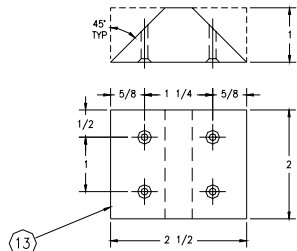
ZONE		REV		REVISIONS		DATE	APPROVED
				DESCRIPTION			



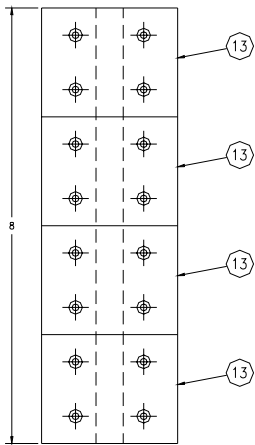
RIGHT SIDE CONTROL PANEL
2 REQUIRED



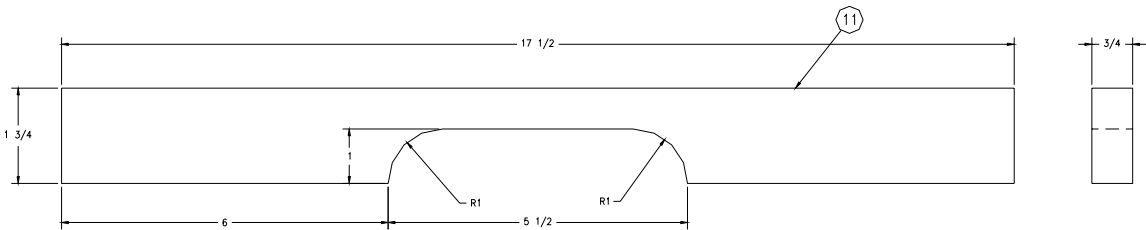
LEFT SIDE CONTROL PANEL
2 REQUIRED



CORNER GUSSET
4 REQUIRED



MAKE (4) ITEMS 13 AT ONE TIME.
(AS SHOWN ABOVE)
CHAMFER CORNERS AFTER DRILLING
THEN SEPARATE INTO 4 PIECES



BASE
4 REQUIRED

16

15

14

13

12

11

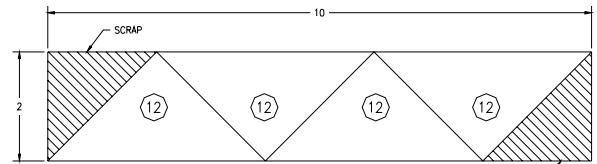
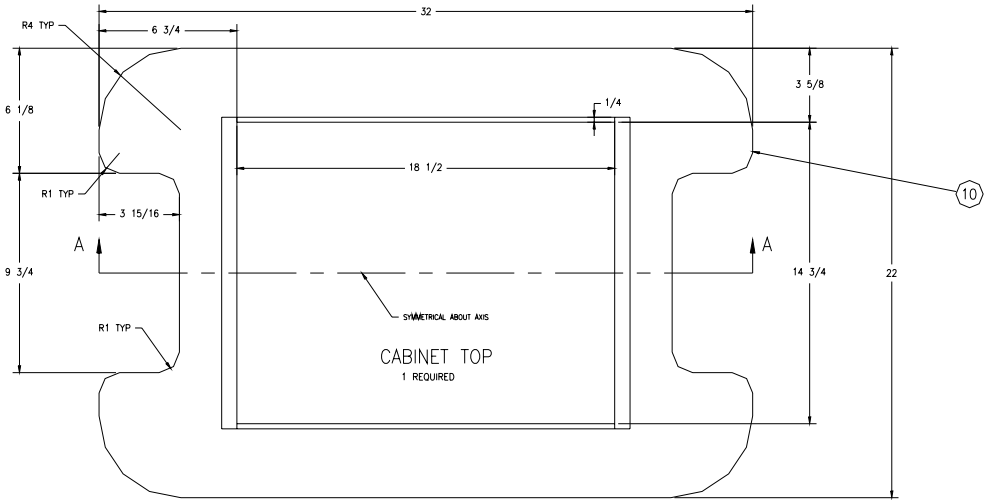
10

9

ZONE		REVISIONS		
REV	DESCRIPTION	DATE	APPROVED	

D

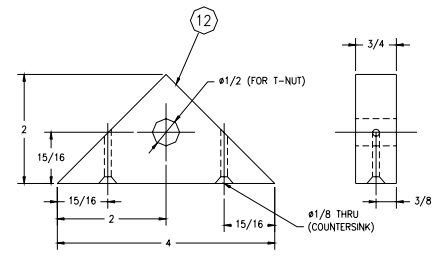
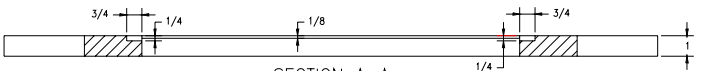
D



CUT FROM 2" X 3/4" PINE AS SHOWN ABOVE

C

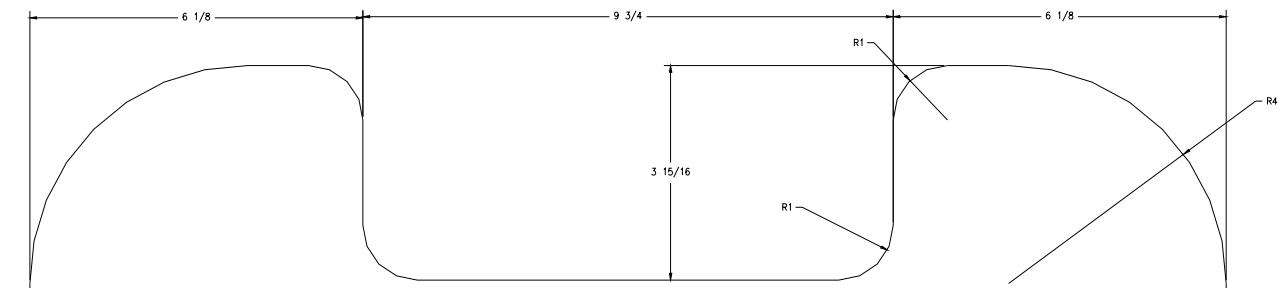
C



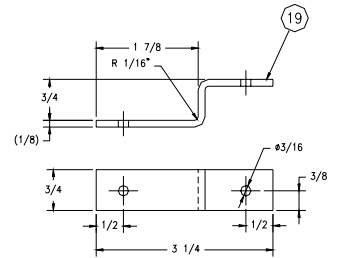
BASE CORNER SUPPORT

B

B



FULL SIZE PATTERN

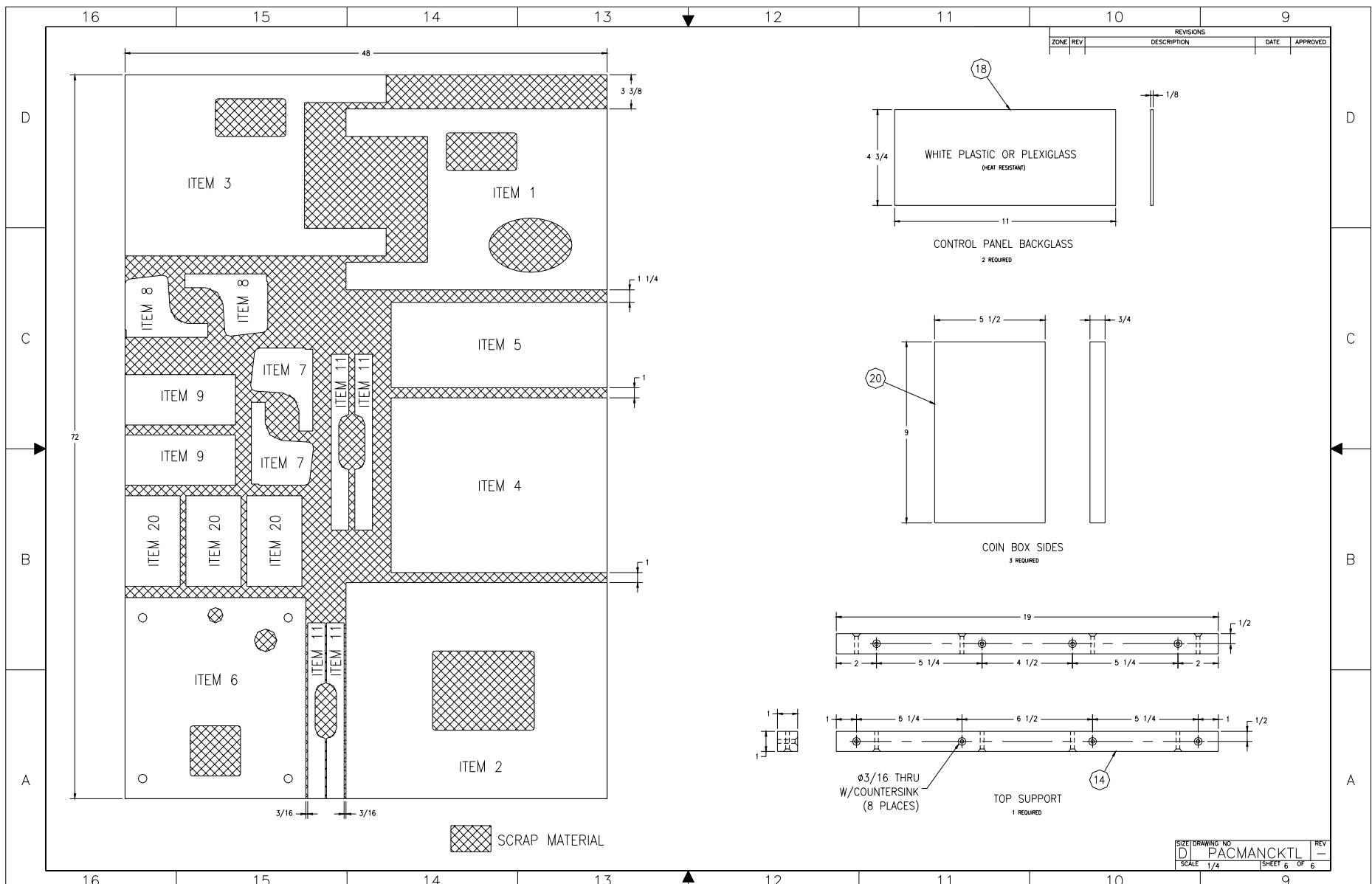


MAKE FROM METAL: STEEL, BRONZE, ETC...

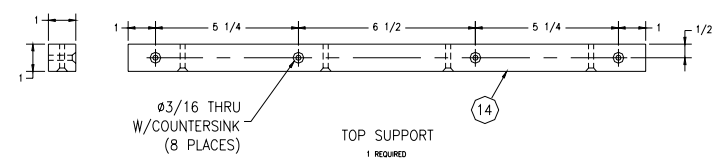
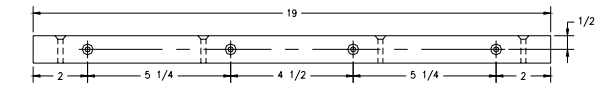
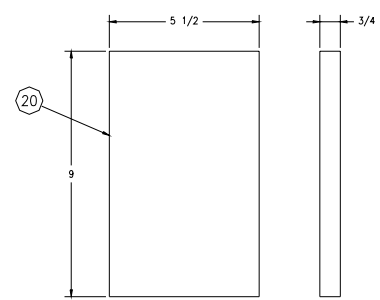
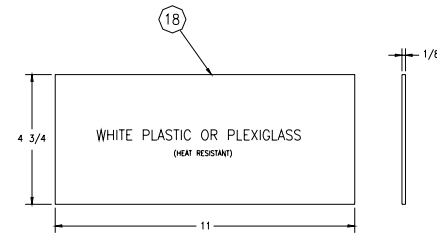
CONTROL PANEL BRACKET
4 REQUIRED

A

A



REVISIONS				
ZONE	REV	DESCRIPTION	DATE	APPROVED



 SCRAP MATERIAL